



WESTON SENIOR ACTIVITIES CENTER

203-222-2608
9 School Road
Weston, CT 06883

Monday-Thursday - 9:00 am to 3:00 pm
Friday - 9:00 am to 12:00 pm

www.westonseniorcenter.info

Weston Senior Services And Resources

Weston Senior Center
www.westonseniorcenter.info
203-222-2608

9 School Road
Mailing Address:
P.O. Box 1007
Weston, CT 06883

Center Staff:

Director: Wendy Petty
Program Coordinator:
Carla Jegen
Asst. Program Coordinator:
Linda Gilmore

Dept. of Social Services

203-222-2663
Director:
Charlene Chiang-Hillman
Administrative Assistant:
Suzanne Friedman

Dial-a-Ride

203-222-2576
Driver: Gordon Green
(24-hour notice required)

Weston Town Hall

www.westonct.gov
203-222-2500

Commission on Aging

Helen R. de Keijzer, Chair
Bruce Lorentzen, VC
Don Gumaer, Secretary
Peggy A. Anderson
Allison Lisbon
Dale Robinson
Richard Wolf

September/October 2017

Greetings!

To help the Center reduce unnecessary expense and use of paper, please let us know if your household receives more than one copy of the newsletter. For the greatest and greenest way to stay updated, join our email list. Receiving Center information by email provides the added benefit of getting a weekly activity calendar as well as special bulletins and program notices. (We will *not* share your email address or inundate you with messages.)

Please call us at 203-222-2608 or, better yet, come by to give us your information in person. Stay a while, explore the Center facility, and share your thoughts and suggestions.

We look forward to seeing you soon!

Wendy, Carla, and Linda

~~~~~

*Update: We have decided not to hold the Alden Sherman Classic car show this year.*

~~~~~



Photo Credit: Charlie Cole, Weston Fire Department

*Thank you to the
Weston Fire Department
Weston EMS,
Weston Historical Society,
and Weston's Selectmen for
generously hosting BBQ's
this summer!*

The mission of the Weston Senior Activities Center is to serve as the hub of programs and events supporting the well being of community members as they age.



Wednesday Movies Start at 12:45 and Thursday Movies Start at 12:30pm Sign-up is required, call (203) 222-2608



9/14: Tommy's Honor, PG: Tom and Tommy Morris, father and son pioneers of professional golf, relied on skill, business acumen and working-class street smarts to make Tommy one of the world's first sports superstars and founder of the modern game of golf.

9/21: Gifted, PG-13: Frank Adler (Chris Evans) is a single man raising a child prodigy - his spirited young niece Mary (Mckenna Grace) - in a coastal town in Florida. Frank's plans for a normal school life for Mary are foiled when the 7-year-old's mathematical abilities come to the attention of Frank's formidable mother, Evelyn (Lindsay Duncan), whose plans for her granddaughter threaten to separate Frank and Mary.

9/28: Going in Style, PG-13: Lifelong buddies Willie (Morgan Freeman), Joe (Michael Caine) and Albert (Alan Arkin) decide to buck retirement and step off the straight-and-narrow when their pension funds become a corporate casualty. Desperate to pay the bills and come through for their loved ones, the three men risk it all by embarking on a daring adventure to knock off the very bank that absconded with their money.

10/5: The Circle, PG-13: Mae Holland (Emma Watson) seizes the opportunity of a lifetime when she lands a job with the world's most powerful technology and social media company. Encouraged by the company's founder (Tom Hanks), Mae joins a groundbreaking experiment that pushes the boundaries of privacy, ethics and personal freedom. Her participation in the experiment, and every decision she makes soon starts to affect the lives and futures of her friends, family and that of humanity.

10/11: Night of the Hunter—1955: The Rev. Harry Powell (Robert Mitchum) is a religious fanatic and serial killer who targets women who use their sexuality to attract men. Serving time in prison for car theft, he meets condemned murderer Ben Harper (Peter Graves), who confesses to hiding \$10,000 in stolen loot. Released from jail, Powell is obsessed with finding the money, and he tracks down Harper's widow, Willa (Shelley Winters), and her two children, John (Billy Chapin) and Pearl (Sally Jane Bruce).

10/12: Everything Everything, PG-13: Maddy (Amandla Stenberg) is a smart, curious and imaginative 18-year-old who is unable to leave the protection of the hermetically-sealed environment within her house because of an illness. Olly (Nick Robinson) is the boy next door who won't let that stop them from being together. Gazing through windows and talking only through texts, Maddy and Olly form a deep bond that leads them to risk everything to be together, even if it means losing everything.

10/18: Born in China, (Disney) G: From frigid mountains to the heart of the bamboo forest, filmmaker Lu Chuan follows the adventures of three animal families in China: the majestic panda, the savvy golden monkey and the elusive snow leopard.

10/26: Queen of the Desert, PG-13: Gertrude Bell's life as an explorer, cartographer, and archaeologist for the British Empire.

"Art With Friends" with Keith Brooks

Mondays from 1:00-3:00pm (9/11, 10/2, 10/16, 10/23, 10/30)

You will receive weekly pre-class emails about the next class's topic and supply needs. No need to sign up for whole series; just ask to be included in the email and we will keep you up to date. All levels are welcome, come and join fellow artists. Call (203) 222-2608 for more details and to sign up! \$5.00 per class or discount for series.

Join Keith for his field trip to Weir Farm on Friday, Sept. 15th.

Wednesday Luncheons and Presentations

Sign-up is required by the day before at 2:00pm, call (203) 222-2608. All lunches begin at noon and cost \$4.00 each, unless otherwise noted.

9/7: Meadow Ridge is hosting an outside luncheon on their patio. Stay for a tour if you are interested.

9/13: Senior Center
After lunch, presentation by the Westport Weston Health District's Monica Wheeler. A special program for Fall Prevention Month with various topics followed by Q and A.

9/20: Senior Center
After lunch, join Synergy HomeCare for a fun presentation on "50 Silly Things Seniors Do".

9/27: Norfield Church Kick Off Luncheon
Entertainment by Airborne Jazz.
This lunch is sponsored by Fairfield County Bank and is free.



Fairfield County Bank

10/4: Senior Center
After lunch, join Elsa Cantor for another amazing travel presentation on the South Pacific.

10/11: Senior Center
12:45pm Movie: *Night of the Hunter*.

10/18: Senior Center
12:45pm Movie: *Born in China*

10/25: Norfield Church
Halloween Luncheon and costume contest.
Entertainment by Thomas Hanford. *Prizes will be given in the following categories: Best Overall, Most Original, Most Unrecognizable. Everyone wearing a costume will have a chance to win something from our drawing.*

Looking for ways to help support our Senior Center?

We appreciate donations of all kinds. Here are a few ideas:

1. Donate new or unused items for our Holiday Re-Gifting Sale which will be the Monday after Thanksgiving.
2. Make a donation to the Weston Senior Activities Center in memory of someone or to mark a special occasion (see back cover).
3. Make a donation to the Friends of the Weston Senior Activities Center, which is a 501(c)(3) (see page 6).
4. Donate K-Cup coffee pods, we always need them!
5. Volunteer to help serve at our Wednesday luncheons or contribute a dessert.
6. Volunteer to teach a class. We know there is a lot of talent out there. Call us, we would love to hear from you.
7. Make a donation to help cover newsletter printing costs.

Thank you for supporting our Senior Center!

Our Seniors Are Going Places

Sign-up is required for all trips (203) 222-2608

Thursday, September 14th: Hobby Lobby/On The Border
Depart Norfield at 10am. Bring money for lunch and shopping!

Friday, September 15th: Weir Farm

Depart Norfield at 9:15am

10am Tour of Weir Farm house

11am-12pm Art class with Keith (materials are provided)

12pm-1pm Picnic lunch (bring your own), free time until 2

2pm Depart Weir Farm for home. No charge.

Thursday, September 28th: Locust Grove Mansion

Depart Norfield at 9:15am

Tour the S.B. Morse Mansion and Gardens, lunch at Table Talk Diner. \$10 fee for entry and tour due at sign-up. Bring money for lunch. Space is limited to 16 people.

NEW DATE: Tuesday October 10th:

Chihuly Exhibition at the New York Botanical Garden

Depart Norfield at 8:45am



This trip includes a guided Chihuly Walking Tour, Garden Pass Admission, Garden Market Basket lunch in the Pine Tree Café, round trip coach bus with gratuity and light snack for ride back, \$68.00.

A \$30.00 deposit is due at time of sign-up and payment in full is due by September 15th.

11am Arrive NYBG

11:30am Guided Walking Tour of Chihuly

12:30pm Lunch in the Pine Tree Café

1:00pm-2:00pm relax and enjoy lunch or visit the gardens (all garden access), visit the gift shop.

2:15pm Bus departs NYBG for Weston

Monday, October 16th: Kent Shopping Trip and lunch at Fife and Drum

Depart Norfield at 9:30am

Our annual trip to Kent! One of the favorite drives up to enjoy lunch at Fife n Drum and shopping in Kent. Bring own money for lunch and shopping. Space is limited to 18 to ride on bus.

Thursday, October 26th: Lockwood Mathews Mansion

Depart Norfield at 10:45am

There will be a 45 minute tour of the 1st floor and servant quarters. \$6.00 due at sign-up.

Walk in our Gym

Tuesday, Thursdays, and Fridays



10 laps=1/4 mile. Grab your friends or walk alone!

If you want us to, we will keep a card on file so you can keep track of your progress!

Exercise Classes

Try any class first for free!

Tap Dancing with Sandy-Must pay for series in full

Mondays at 10:00am - Wear tap shoes.

Our tap group is growing! Come and try a class!

Meditation with Suzanne

Mondays at 9:30-10:15am. No fee.

Feldenkrais with Cathy-\$4.00 per class, drop in okay

Mondays and Wednesdays at 10:00am

Pickleball-free, drop in okay

Mondays at 11am

Thursdays at 11:15am

Strength & Fitness with Sandy- \$4.00 per class, drop in okay

Tuesdays & Thursdays at 11:00am

Tai Chi with Bill Wren-Must pay for series in full

Thursdays at 9:15am

Tai Chi with Mari Lewis-Must pay for series in full

Tuesdays at 9:30am

Yoga with Melania-\$4.00 per class, drop in okay

Fridays at 9:00am

Gentle Yoga with Joy-\$4.00 per class, drop in okay

Wednesdays at 10:00am

Pilates with Karen-Must pay for series in full

Mondays at 12pm

Attention retired or about-to-retire men of Weston!

The Y's Men of Westport/Weston is looking for new members to join as active participants. The group (once associated with the YMCA) will begin its 41st season in September.

The Y's Men count as members nearly 400 men who have left or will soon leave the world of work. By staying engaged through weekly meetings with stimulating speakers and participating in some of our two dozen clubs and activities, we believe our members will live longer and lead healthier and more rewarding lives....plus...your wife is right! You need to get out of the house more.

Check the Y's Men brochure at the Senior Center or go to the website: www.ysmenwestportweston.org, then come to a meeting to see what we have to offer.

Westport Weston Health District
Flu Shots Thursday, October 19th, 11am-12pm
At the Weston Senior Center

Please bring your insurance card with you.
 Appointments are necessary, call to sign-up
 (203) 222-2608.



September 2017

<i>Mon</i>	<i>Tue</i>	<i>Wed</i>	<i>Thu</i>	<i>Fri</i>
Art Exhibit Suzanne Keany				1 9am Yoga 10am Canasta 10am Mark Albertson <i>Update: Syria and Iraq</i> 11am Walk in the Gym
4 Senior Center Closed Labor Day 	5 8:30am Y's Men's Backgammon 9:15am Commission on Aging meeting 9:30am Tai Chi 11am Strength & Fitness 1-4pm Duplicate Bridge 1:30pm Walk in the Gym	6 10am Feldenkrais 10am Yoga 12pm Lunch at Meadow Ridge Sign-up required.	7 9:15am Tai Chi 11am Strength & Fitness 11am-2:30pm Massage 11:15am Pickleball 12pm Brain Games and Lunch sponsored by Wilton Meadows 12:30pm Movie <i>A Street Cat Named Bob</i> 1:30pm Walk in the Gym	8 9am Yoga 10am Canasta 11am Walk in the Gym
11 9:30am Meditation 10am Knitting 10am Tap Dancing 10am Feldenkrais 10:30-12pm Thomas Burke Comparative Religion Series—Study of Religion 11am Pickleball 12pm Pilates 1pm Art With Friends	12 8:30am Y's Men's Backgammon 9:30am Tai Chi w/Mari 10:30am Medicare Appt. 11am Strength & Fitness 1-4pm Duplicate Bridge 1:30pm Walk in the Gym	13 10am Feldenkrais 10am Yoga 12pm Lunch at Senior Center Westport Weston Health District—Monica Wheeler Fall Prevention Month, Q & A. <i>Blood Pressure Weston EMS</i>	14 9:15am Tai Chi 10am Hobby Lobby/On The Border, shopping and lunch. Sign-up required. 11am Strength & Fitness 11am-2:30pm Massage 11:15am Pickleball 12:30 Movie <i>Tommy's Honor</i> 1:30pm Walk in the Gym	15 9am Yoga 9:15am Depart from Norfield for Weir Farm 10am Canasta 11am Walk in the Gym
18 9:30am Meditation 10am Knitting 10am Tap Dancing 10am Feldenkrais 10:30-12pm Thomas Burke Comparative Religion Series—Judaism 11am Pickleball 12pm Pilates No art class today	19 8:30am Y's Men's Backgammon 9:30am Tai Chi w/Mari 11am Strength & Fitness 11:30am Victorian High Tea Party \$10, Sign-up required. 1-4pm Duplicate Bridge 1:30pm Walk in the Gym	20 10am Feldenkrais 10am Yoga 12pm Lunch at Senior Center 12:45pm Dessert provided Synergy Homes. Jay will share "50 Silly Things Seniors Do"	21 9:15am Tai Chi 11am Strength & Fitness 11am-2:30pm Massage 11:15am Pickleball 12:30pm Movie <i>Gifted</i> 1:30pm Walk in the Gym	22 9am Yoga 10am Canasta 11am Walk in the Gym
25 9:30am Meditation 10am Knitting 10am Tap Dancing 10am Feldenkrais 10:30-12pm Thomas Burke Comparative Religion Series—Christianity 11am Pickleball 12pm Pilates No art class today 1pm Travel Group Meeting	26 8:30am Y's Men's Backgammon 9:30am Tai Chi w/Mari 10:30am Medicare Appt 11am Strength & Fitness 1-4pm Duplicate Bridge 1pm The Price is Right By Visiting Angels, Sign-up required. 1:30pm Walk in the Gym	27 10am Feldenkrais 10am Yoga 12pm Lunch at Norfield Church <i>Kick Off Luncheon Sponsored by Fairfield County Bank. Entertainment by Airborne Jazz. No charge for lunch, Sign-up is required!</i>	28 9:15am Locust Grove Mansion trip 9:15am Tai Chi 11am Strength & Fitness 11am-2:30pm Massage by appt 11:15am Pickleball 12:30pm Movie <i>Going in Style</i> 1:30pm Walk in the Gym	29 9am Yoga 10am Canasta 11am Walk in the Gym

October 2017

Mon	Tue	Wed	Thu	Fri
2 9:15am Commission Mtg. 9:30am Meditation 10am Knitting 10am Tap Dancing 10am Feldenkrais 10:30am-12pm Thomas Burke Comparative Rel.- Hinduism & Buddhism 11am Pickleball 12pm Pilates 1pm Art with Friends	3 8:30am Y's Men's Backgammon 9:30am Tai Chi w/Mari 10am Mark Albertson <i>Breitbart News</i> 11am Strength & Fitness 1-4:00pm Duplicate Bridge 1:30pm Walk in the Gym	4 10am Feldenkrais 10am Yoga 12pm Lunch Senior Center 12:45pm Elsa Cantor Presents a travel presentation on South Pacific <i>Blood Pressure Weston EMS</i>	5 9:15am Tai Chi w/Bill 11am Strength & Fitness 11am-2:30pm Massage by appt 11:15am Pickleball 12:30pm Movie <i>The Circle</i> 1:30pm Walk in the Gym	6 9am Yoga 10:00am Canasta 11am Walk in the Gym
9 Senior Center Closed Town Hall Offices Closed In Observance of Columbus Day 	10 8:30am Y's Men's Backgammon 8:45am Depart Norfield for New York Botanical Garden Trip for the Chihuly Exhibit 9:30am Tai Chi w/Mari 11am Strength & Fitness 1-4:00pm Duplicate Bridge 1:30pm Walk in the Gym	11 10am Feldenkrais 10am Yoga 12pm Lunch Senior Center 12:45pm Movie <i>Night of the Hunter</i>	12 9:15am Tai Chi w/Bill 11am Strength & Fitness 11am-2:30pm Massage by appt 11:15am Pickleball 12:30 Movie <i>Everything Everything</i> 1:30pm Walk in the Gym	13 9am Yoga 10am Canasta 11am Art Gottlieb <i>The Future of Main Street in the Age of Big Box Stores and Cyber-commerce</i> 11am Walk in the Gym
16 9:30am Depart Norfield for Kent, Fife and Drum and Shopping 9:30am Meditation 10am Knitting 10am Tap Dancing 10am Feldenkrais 11am Pickleball 12pm Pilates 1pm Art With Friends	17 8:30am Y's Men's Backgammon 9:30am Tai Chi w/Mari 10am Beading with Carla 10:30am-12:30pm Medicare Appt. 11am Strength & Fitness 1-4:00pm Duplicate Bridge 1:30pm Walk in the Gym	18 10am Feldenkrais 10am Yoga 12pm Lunch Senior Center 12:45pm Movie <i>Born in China</i>	19 9:15am Tai Chi w/Bill 11am Strength & Fitness 11am-2:30pm Massage by appt 11am-12pm Flu Shots Sign-up required. 11:15am Pickleball 12pm Brain Games and Lunch, sponsored by Wilton Meadows. No Movie Today	20 9am Yoga 10am Canasta 11am Art Gottlieb <i>The Christmas Fire on Shippan Point: December 25, 2011</i> 11am Walk in the Gym
23 9:30am Meditation 10am Knitting 10am Tap Dancing 10am Feldenkrais 11am Pickleball 12pm Pilates 1pm Art With Friends	24 8:30am Y's Men's Backgammon 9:30am Tai Chi w/Mari 10:30am-12:30pm Medicare Appt. 11am Strength & Fitness 1-4:00pm Duplicate Bridge 1:30pm Walk in the Gym	25 10am Feldenkrais 10am Yoga 12pm Lunch Norfield Halloween Luncheon Wear Your Costume Entertainment by Tom Hanford 	26 9:15am Tai Chi w/Bill Sign-up required. 10:45am Depart Norfield for Lockwood Mathews Mansion tour 11am Strength & Fitness 11am-2:30pm Massage by appt 11:15am Pickleball 12:30 Movie <i>Queen of the Desert</i> 1:30pm Walk in the Gym	27 9am Yoga 10am Canasta 10am Pumpkin Candle Holder with Linda 11am Walk in the Gym
30 9:30am Meditation 10am Knitting 10am Tap Dancing 10am Feldenkrais 11am Pickleball 12pm Pilates 1pm Art With Friends	31 8:30am Y's Men's Backgammon 9:30 Tai Chi w/Mari 10:30am-12:30pm Medicare 11am Strength & Fitness 1pm Halloween Stories by Hal Hutchinson 1-4:00pm Duplicate Bridge 1:30pm Walk in the Gym			

Medicare Open Enrollment

In your mail mid-September: "Medicare and You-2018"

The annual open enrollment period for the drug plans for original/traditional Medicare (Medicare Part D) for 2018 coverage is **October 15, 2017 through December 7, 2017**. During this time period you can easily change insurance providers and coverage without penalty.

Make an appointment to review your prescription drugs for 2018 offered Medicare Part D insurance plans with a CHOICES counselor. There are changes to 2017 Medicare Part D offerings in Connecticut including new insurance plans, dropped Insurance plans, changed formularies and increased premiums. Your prescription medications including precise name, dosage and frequency of use will be reviewed on the Medicare website and the Medicare Part D insurance plans that are the most suitable will be given to you in order of price effectiveness. Last year reviews helped save several people more than \$600 yearly in drug & premium costs. Some people had not reviewed their plans for several years; others changed providers from the previous year because of major formulary changes.

During open enrollment period half-hour appointments will be available. Make your appointments by calling the Weston Senior Center at (203) 222-2608. **Book appointments early.** Couples must book separate half-hour appointments. There may not be time available when booking later, which could mean scrambling for help. If the times or dates are not convenient simply contact a CHOICES counselor at 1(800) 994-9422. Never a fee for this service.

Meta Schroeter, CHOICES Counselor

Scams have been all around us this summer – IRS, computer, delivery of gifts, and Grandma/Grandpa send money to me!! Be alert! Never give any personal information over the phone or agree to send money.

Elder Care Book Corner

We are starting a new corner in our library on elder care. Jane Hutchinson, from Helping Hearts Homecare of Weston, has donated her time reviewing books for our corner. *The End of Your Life Book Club*, *Jane Brody's Guide to the Great Beyond*, *The Alzheimer's Prevention and Treatment Diet*, *The Alzheimer's Prevention Program*, and *Are The Keys in The Freezer* are books we have with a summary from Jane. Borrow one of our books from the library simply by signing it out with your name and phone number.



Photo credit: Linda Gilmore

Massage Appointments

Thursdays 11am—2:30pm
Beth Dobseavage is a licensed masseuse and acupuncturist and will be at our senior center on Thursdays. Please call us if you have any questions or to make an appointment.
(203) 222-2608.

Another great trip to Port Jefferson!

Lachat Town Farm

106 Godfrey Road West

www.lachattownfarm.org



Last Friday of the month 4:00pm to 8:00pm - Lachat will host a monthly Farmer's Market featuring local farms, vendors, live music, gourmet food trucks and children's programming. The market opens at 4:00pm-8:00pm.

Friday, September 29th, Friday, October 27th

A "Storm Tip" from the First Selectman's Office

"WHOM SHOULD I CALL WHEN MY POWER GOES OUT?"

When you need to report an electric outage at your house, or inquire when power might be restored, please call your power company. In Weston, that would be either EverSource or United Illuminating. (Most residents in Weston are with Ever Source.)

EVERSOURCE can be reached at 800-286-2000.

Update your notification preferences with EVERSOURCE now to automatically receive important outage and restoration information via text, email and phone.

UNITED ILLUMINATION can be reached at 800-722-5584.

Contact them for text message alerts and additional information.

Please keep these numbers handy in case of a power failure and direct your questions about power outages to your power company.



The Friends of the Weston Senior Activities Center

We would like to thank those of you who made donations to our Friends of the Weston Senior Activities Center over the years! Over the past five years, we have purchased a new excursion bus (with the help of Town of Weston and the Elderly Assistance Fund), contributed to the renovations and expansion of our senior center, and sponsored many trips, lectures, programs and events, just to name a few accomplishments!

The Friends is a 501(c)(3) organization; all donations are tax deductible as allowed by law. The Friends of the Weston Senior Activities Center is dedicated to supporting the Center and enriching and expanding the programs and activities the Center provides.

If you would like to make a donation to the Friends of the Weston Senior Activities Center, please make checks payable to Friends of WSAC and mail to:

Weston Senior Center
PO Box 1007, Weston, CT 06883

Thank you for your continued support!

Travel Group

Interested in travelling but would rather go with a group of friends? We have a brainstorming meeting scheduled for Monday, September 25th at 1:00pm. This group is not organized by the Weston Senior Center, we are just providing a date and time for people to get together to see if a travel group makes sense. Call to let us know you are coming! (203) 222-2608.

Mark Albertson

Sign-up required, call (203) 222-2608

**Friday, September 1st, 10:00am:****Update: Syria and Iraq**

Presentation focuses on the current situation in these tumultuous countries. The Islamic State seems to be on the losing end but will survive to remain a terrorist entity. The update will also discuss the big picture with Saudi Arabia, Iran, Turkey, the United States, Russia and China.

Tuesday, October 3rd, 10:00am:**Breitbart News**

Presentation explores this right wing media outlet and its ties to the White House with Presidential Advisor Steve Bannon. An overview of other right wing media will also be broached.

Art Gottlieb

Sign-up required, call (203) 222-2608

**Friday, October 13th, 11:00am****The Future of Main Street in the Age of Big Box Stores and Cyber-Commerce**

A Wall Street Journal article "New England Country Stores Go Dark" (July 20th, 2017) describes the plight of vacation friendly New England losing much of its unique and traditional character citing "more general stores close as owners age, and online shopping and dollar stores compete".

Friday, October 20th, 11:00am**The Christmas Fire on Shippan Point: Dec. 25, 2011**

An article published in the Stamford Advocate on August 2, 2017, *City Settles 2nd Fire Suit*, details the latest in a series of lawsuits and payments between the City of Stamford, various contractors and the surviving members of the Badger and Johnson families. The article, editorially located on the front page and "above the fold," is a testimony that even after almost seven years "The Christmas Fire" is still a prominent local story.

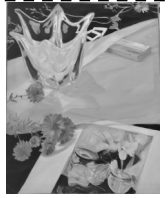
Thomas Burke**Series on Comparative Religion**

Sign-up required, call (203) 222-2608

What, exactly, is religion? And why does one religious tradition differ from another, even when you might not expect it to? Why, for example, are the Abrahamic faiths of Judaism, Christianity, and Islam—despite their common source—often so different? And what kinds of factors separate the beliefs of a Hindu or Buddhists? This course provides an introduction to a few of the world's major religions: Sikhism, Hindu, Buddhist and the Abraham traditions.

Facilitator Thomas Burke has a master's degree in Divinity at Yale Divinity School. Prior to attending Yale Divinity School, Thomas served as a Marine in Iraq and Afghanistan. Thomas gives talks, writes editorials, works with members of Congress on policy issues, and helps run a nonprofit that supports vets in finding community and staying physically active.

This is a series of four lectures. You can come to all four or just one, but sign-up is required. 9/11 Study of Religion, 9/18 Judaism, 9/25 Christianity, and 10/2 Hinduism and Buddhism.

September/October Art Exhibit**Suzanne Andover Keany
The Interior Landscape**

Suzanne Andover Keany has been living and working in Weston for the past 20 years and her current work reflects her interest in the natural world.

The paintings in this exhibition are from an earlier period when she lived in New York. This work explores the interior landscape of the still life. "In both my landscapes and still lives, painting for me is about perception and a desire to impart something of the intensity of seeing to the viewer. Scale is important to me. I like to enlarge objects so that you can really see them, enter into them. This exhibition tries to convey the mystery of the familiar and the joy of recognition."

Keany graduated with honors from the School of Visual Arts at SUNY Purchase and has a B.A. from Barnard College. She was also invited to participate in the Studio Semester Program in NYC. She is a member Of Art/Place, the oldest art cooperative in Connecticut. More of her work can be seen at artplacegallery.org. She has exhibited in New England, New York and Florida. Her work is included in both private and corporate collections.

**Tuesday, September 19th 11:30am—Victorian Tea Party
Norfield Church**

Join us for our second annual tea party! We will have delicious tea sandwiches and pastries. *Wear a special hat and bring your favorite tea cup* and we will provide the rest. The charge for this event is \$10.00. We hope you will come and bring a friend. Space is limited and sign-up is required. Payment is due at time of signing up. Call us at (203) 222-2608 for questions.

**Additional Programs****Tuesday, September 26th at 1:00pm**Visiting Angels presents: **The Price is Right**

Fun and games to guess that price and win! Free, sign-up is required!

**Thursday, September 7th and October 19th, 12pm**Wilton Meadow's presents **Brain Games and Lunch**.

Come and have some fun and see how you do with clever brain games. Enjoy lunch provided by Wilton Meadows. Free, sign-up required.

**Friday, October 27th, 10:00am Pumpkin Candle Holder with Linda**

Bring two sugar pumpkins and we will supply the rest. Space is limited. \$10.00 due at sign-up.

**Tuesday, October 31st, 1:00pm-2:00pm****Halloween Stories** by Hal Hutchinson

Hal doesn't believe in ghosts. A graduate engineer and resident of Weston for 46 years, he believes there is always an eventual explanation for so-called paranormal activity. None the less, the events prior to and during the summer of 1977, in a house on Lyons Plains Road, were unexplainable then and remain so today. They involve a mysterious gravestone, "Ghost hunters of CT" and a small ad in the Weston Forum. Refreshments will be served. Free, sign-up required!, call (203) 222-2608.

Weston Senior Activities Center
P.O. Box 1007
Weston, CT 06883
203-222-2608
www.westonseniorcenter.info/

Presort Standard
U.S. POSTAGE
PAID
Permit No. 2
WESTPORT, CT 06880

Donations to the Senior Center

In Memory of Rod Coleman

From Rod's lunch table friends: Sharon & Jack Bell,
June McGee, Phyllis Michou, Barbara Perchak,
Graciela and Ruffino Ramos, Carolyn & Paul Scribner,
and Meta Schroeter

In Memory of Mary "Mae" Gorsuch

Marie and Peter Cappelli, Terry Castellano, Pat and Bob Davis,
Carol Kane, Karen MacVeigh, Roberta Morelli, Vicki Muller,
Valerie and Anthony Peroni, and Sheila Slattery

~~~~~

While donations are most often given to honor the memory of  
someone dear, donations may also be made to celebrate  
birthdays, anniversaries or other special occasions.

~~~~~

To make a contribution, please make checks
payable to the Weston Senior Activities Center
and mail to:

P.O. Box 1007, Weston, CT 06883.



Cooks Corner

Cherry Squares by Roberta Morelli

Ingredients:

1 can cherry pie filling
2 sticks of butter
3/4 cup of sugar
2 eggs
2 teaspoons vanilla
3 1/2 cup flour
Pinch of salt
~~~~~

Pre-heat oven to 325 degrees, butter and flower a  
9 x 13 pan. Using a hook attachment on mixer,  
cream butter and sugar together, add eggs, flour,  
vanilla and salt. Mix until batter is soft but do not  
over mix!

Spread half of batter in prepared pan, pressing into  
corners, spread cherry pie filling on top, then cover  
with remaining batter as best as you can (baking  
brings it together). Brush with milk and bake for 45  
minutes or until lightly browned.

Cool completely, sprinkle with powdered sugar  
before cutting into squares.